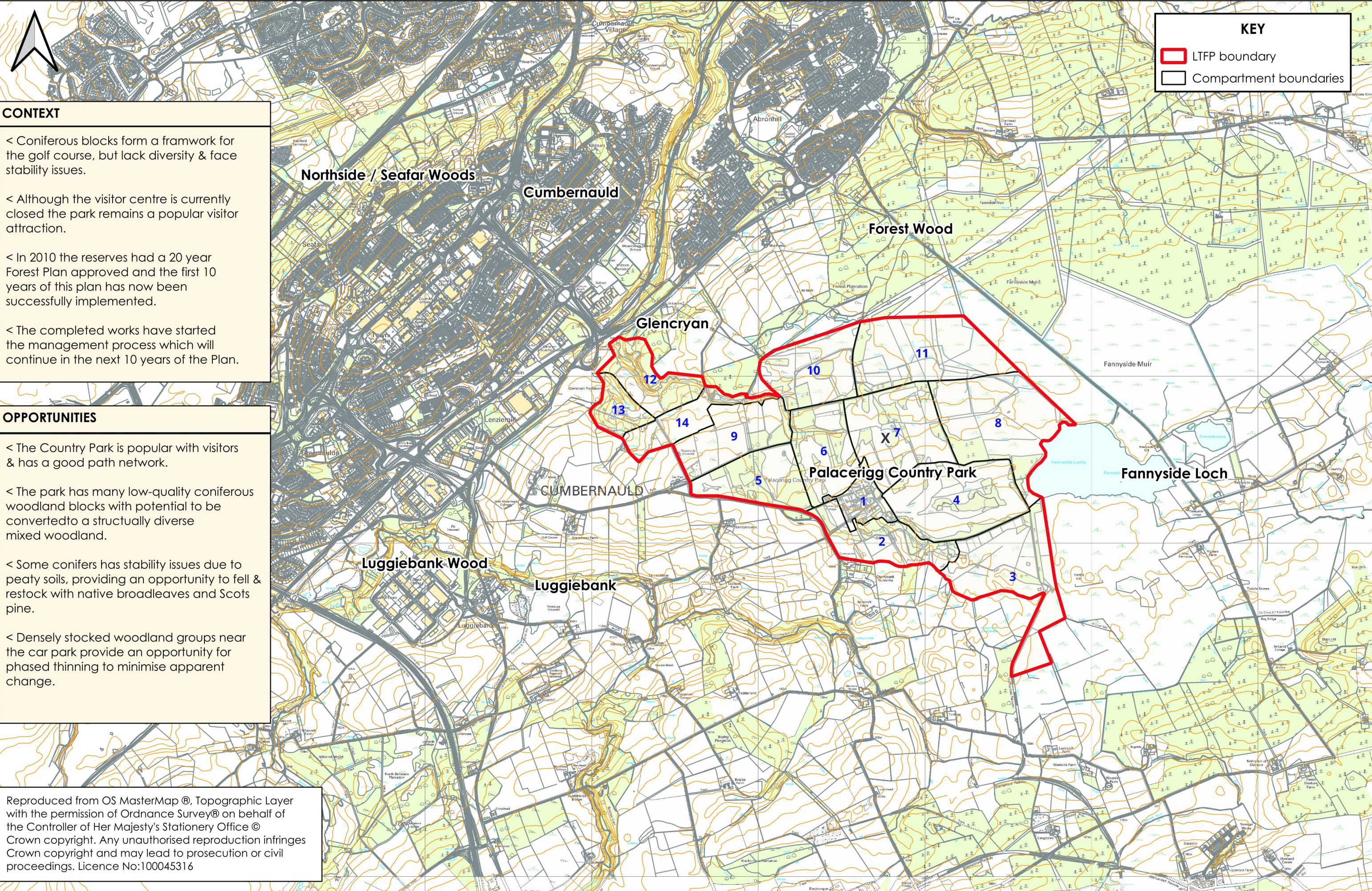


CUMBERNAULD GREENSPACES LONG-TERM FOREST PLAN RENEWAL

MAP 2 - CONCEPTS

Scale - 1:20,000 @ A3

Date: September 2024



KEY

- LTFP boundary
- Compartment boundaries

CONTEXT

- < Coniferous blocks form a framework for the golf course, but lack diversity & face stability issues.
- < Although the visitor centre is currently closed the park remains a popular visitor attraction.
- < In 2010 the reserves had a 20 year Forest Plan approved and the first 10 years of this plan has now been successfully implemented.
- < The completed works have started the management process which will continue in the next 10 years of the Plan.

OPPORTUNITIES

- < The Country Park is popular with visitors & has a good path network.
- < The park has many low-quality coniferous woodland blocks with potential to be converted to a structurally diverse mixed woodland.
- < Some conifers has stability issues due to peaty soils, providing an opportunity to fell & restock with native broadleaves and Scots pine.
- < Densely stocked woodland groups near the car park provide an opportunity for phased thinning to minimise apparent change.

Reproduced from OS MasterMap®, Topographic Layer with the permission of Ordnance Survey® on behalf of the Controller of Her Majesty's Stationery Office © Crown copyright. Any unauthorised reproduction infringes Crown copyright and may lead to prosecution or civil proceedings. Licence No:100045316